



# Flight Plan & Site Survey

Created using **RPAS Wilco®**

Operation Name:	Adimair
Pilot Name:	[REDACTED]
Pilot Certificate:	[REDACTED]
Flight Start:	July 8, 2023 4:36 PM
Flight End:	July 8, 2023 6:36 PM
Flight Area (Latitude):	45° 45' 12.00" N ( 45.753 )
Flight Area (Longitude):	73° 45' 14.00" W ( -73.754 )
Altitude - Radius:	Alt: 600 ft - Rad: 926.0 m ( 0.5 nm)
Airspace:	UNCONTROLLED
FIR - Contact:	CZUL - 506-867-7173

Please ensure you received all required authorizations prior to flight.

## Disclaimer

This Site Survey was created using RPAS Wilco by AIM Robotics. The flight plan contained is intended only for RPAS flights on the date/time and location specified. The user accepts all responsibility for the accuracy and completeness of the information contained.

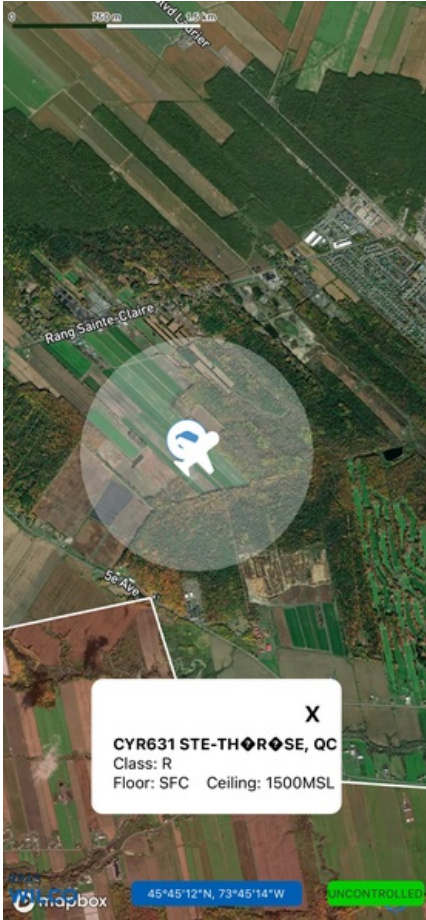
For the complete Terms & Conditions, see

<https://rpswilco.com/#/tnc>



## Included

- Site Survey
- Obstacles (if available)
- Nearby Aerodromes
- Canadian Aviation Regulations
- GFA
- Aerodrome Supplements
  - METAR & TAF (if available)
  - NOTAMS
  - CFS

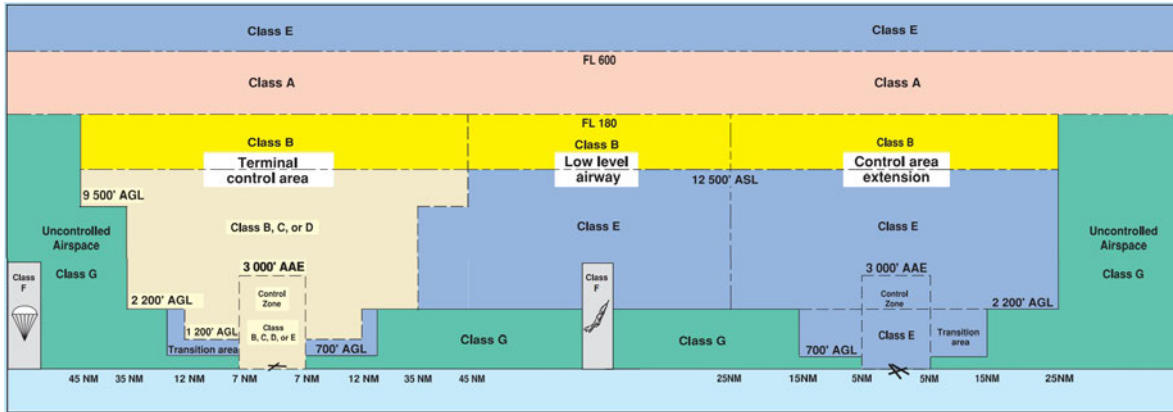
## Flight Map



## MAP Details

	Latitude	Longitude
 <b>MODEL</b>	45° 45' 12.00" N ( 45.753 )	73° 45' 14.00" W ( -73.754 )
 <b>Pilot</b>	45° 45' 15.60" N ( 45.7543 )	73° 45' 17.60" W ( -73.7549 )

## Airspace Classification



## Overlying Airspaces

Class	Name	Floor	Ceiling
E	Montreal FIR CAE	2000MSL	12500MSL
B	Montreal FIR CAE	12500MSL	18000MSL
C	Montral, QC TCA XPNDR MANDTRY	3000MSL	5000MSL
C	Montral, QC TCA XPNDR MANDTRY	5000MSL	12500MSL
C	Montral, QC TCA XPNDR MANDTRY	2000MSL	3000MSL
E	T693 Airway	2200AGL	12500MSL
B	T693 Airway	12500MSL	18000MSL
E	T705 Airway	2200AGL	12500MSL
B	T705 Airway	12500MSL	18000MSL
B	T781 Airway	12500MSL	18000MSL
E	T781 Airway	2200AGL	12500MSL
E	Montral Intl , QC TA XPNDR MANDTRY	1300MSL	1500MSL
C	Montral, QC TCA XPNDR MANDTRY	1500MSL	2000MSL
B	T616 Airway	12500MSL	18000MSL
E	T616 Airway	2200AGL	12500MSL
B	T662 Airway	12500MSL	18000MSL
E	T662 Airway	2200AGL	12500MSL
E	Montreal FIR CAE	6000MSL	12500MSL
B	Montreal FIR CAE	12500MSL	18000MSL

## Nearest Aerodromes & Distance from Operation

LAC AGILE (MASCOUCHE) (CSA2 AERODROME Reg)	Lat: 45.791	Long: 73.638	9.916 KM	5.35 NM
PASSPORT HELICO (CPP8 HELIPORT Reg)	Lat: 45.723	Long: 73.595	12.784 KM	6.9 NM
BOISVERT AND FILS (CSA4 WATERDROME Cert)	Lat: 45.646	Long: 73.597	17.056 KM	9.21 NM
ST ESPRIT (CES2 AERODROME Reg)	Lat: 45.911	Long: 73.672	18.644 KM	10.07 NM

# Canadian Aviation Regulations

## Division III — General Operating and Flight Rules

For full listing please visit <https://laws-lois.justice.gc.ca/eng/regulations/SOR-96-433/FullText.html#s-901.27>

### Visual Line-of-sight

- **901.11 (1)** Subject to subsection (2) no pilot shall operate a remotely piloted aircraft system unless the pilot or a visual observer has the aircraft in visual line-of-sight at all times during flight.
- **(2)** A pilot may operate a remotely piloted aircraft system without the pilot or a visual observer having the aircraft in visual line-of-sight if the operation is conducted in accordance with a special flight operations certificate — RPAS issued under section 903.03.

### Procedures

- **901.23 (1)** No pilot shall operate a remotely piloted aircraft system unless the following procedures are established:
  - **(a)** normal operating procedures, including pre-flight, take-off, launch, approach, landing and recovery procedures; and
  - **(b)** emergency procedures, including with respect to
    - **(i)** a control station failure,
    - **(ii)** an equipment failure,
    - **(iii)** a failure of the remotely piloted aircraft,
    - **(iv)** a loss of the command and control link,
    - **(v)** a fly-away, and
    - **(vi)** flight termination.
- **(2)** If the manufacturer of the remotely piloted aircraft system provides instructions with respect to the topics referred to in paragraphs (1)(a) and (b), the procedures established under subsection (1) shall reflect those instructions.
- **(3)** No pilot shall conduct the take-off or launch of a remotely piloted aircraft unless the procedures referred to in subsection (1) are reviewed before the flight by, and are immediately available to, each crew member.
- **(4)** No pilot shall operate a remotely piloted aircraft system unless the operation is conducted in accordance with the procedures referred to in subsection (1).

### Site Survey

**901.27** No pilot shall operate a remotely piloted aircraft system unless, before commencing operations, they determine that the site for take-off, launch, landing or recovery is suitable for the proposed operation by conducting a site survey that takes into account the following factors:

- **(a)** the boundaries of the area of operation;
- **(b)** the type of airspace and the applicable regulatory requirements;
- **(c)** the altitudes and routes to be used on the approach to and departure from the area of operation;
- **(d)** the proximity of manned aircraft operations;
- **(e)** the proximity of aerodromes, airports and heliports;
- **(f)** the location and height of obstacles, including wires, masts, buildings, cell phone towers and wind turbines;
- **(g)** the predominant weather and environmental conditions for the area of operation; and
- **(h)** the horizontal distances from persons not involved in the operation.

### Operations at or in the Vicinity of an Aerodrome, Airport or Heliport

- **901.47 (1)** No pilot shall operate a remotely piloted aircraft at or near an aerodrome that is listed in the *Canada Flight Supplement* or the *Water Aerodrome Supplement* in a manner that could interfere with an aircraft operating in the established traffic pattern.
- **(2)** Subject to section 901.73 no pilot shall operate a remotely piloted aircraft at a distance of less than
  - **(a)** three nautical miles from the centre of an airport; and
  - **(b)** one nautical mile from the centre of a heliport.
- **(3)** No pilot shall operate a remotely piloted aircraft at a distance of less than three nautical miles from the centre of an aerodrome operated under the authority of the Minister of National Defence unless the operation is conducted in accordance with a special flight operations certificate — RPAS issued under section 903.03.

### Records

- **901.48 (1)** Every owner of a remotely piloted aircraft system shall keep the following records:
  - **(a)** a record containing the names of the pilots and other crew members who are involved in each flight and, in respect of the system, the time of each flight or series of flights and
  - **(b)** a record containing the particulars of any mandatory action and any other maintenance action, modification or repair performed on the system, including
    - **(i)** the names of the persons who performed them,
    - **(ii)** the dates they were undertaken,
    - **(iii)** in the case of a modification, the manufacturer, model and a description of the part or equipment installed to modify the system, and
    - **(iv)** if applicable any instructions provided to complete the work.
- **(2)** Every owner of a remotely piloted aircraft system shall ensure that the records referred to in subsection (1) are made available to the Minister on request and are retained for a period of
  - **(a)** in the case of the records referred to in paragraph (1)(a), 12 months after the day on which they are created; and
  - **(b)** in the case of the records referred to in paragraph (1)(b), 24 months after the day on which they are created.
- **(3)** Every owner of a remotely piloted aircraft system who transfers ownership of the system to another person shall, at the time of transfer, also deliver to that person all of the records referred to in paragraph (1)(b).

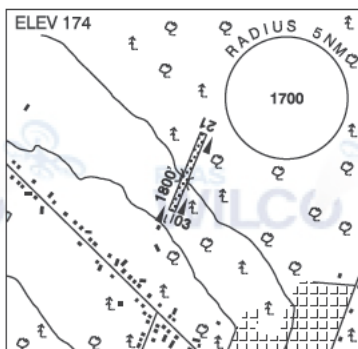
QUEBEC

AERODROME/FACILITY DIRECTORY

## LAC AGILE (MASCOCHE) QC

CSA2

<b>REF</b>	N45 47 28 W73 38 17 3.5NNW 15°W (2015) UTC-5(4) Elev 174' A5002 VTA
<b>OPR</b>	Gestion Wilburdea Inc 514-249-4040 or 450-675-0350 Reg PPR
<b>PF</b>	B-1 C-2,3,4,5,6
<b>FLT PLN</b> <b>FIC</b>	(bil) Québec 866-GOMÉTÉO or 866-WXBRIEF (Toll free wi hin Canada) or 866-541-4105 (Toll free within Canada & USA)
<b>SERVICES</b> <b>S</b>	1,4
<b>RWY DATA</b> <b>RCR</b>	Rwy 03/21 1800x50 GRASS Opr No win maint
<b>COMM</b> <b>ATF</b>	tfc 123.2 2NM 2000 ASL
<b>PRO</b>	Rgt hand circuits Rwy 21 (CAR 602.96). Touch and go not auth.
<b>CAUTION</b>	Bridge crossing ditch 1000' from displ thld Rwy 21. Possibility of wildlife on the rwy.



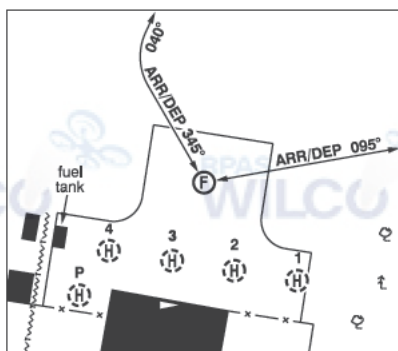
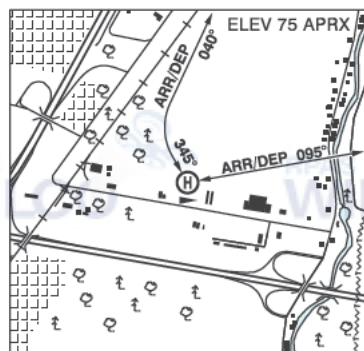


QUEBEC

AERODROME/FACILITY DIRECTORY

## MONTRÉAL / PASSPORT HÉLICO QC (Heli)

CPP8



<b>REF</b>	N45 43 21 W73 35 43 1SE 15°W (2016) UTC-5(4) Elev 75' aprx VTA A5002
<b>OPR</b>	Passport Hélico 450-474-4888 Fax 450-474-6323 Reg PPR
<b>PF</b>	A-1,3,6,7,8 C-2,5
<b>FLT PLN</b>	(bil)
<b>FIG</b>	Québec 866-GOMÉTÉO or 866-WXBRIEF (Toll free within Canada) or 866-541-4105 (Toll free within Canada & USA)
<b>ACC</b>	Montréal 514-633-3211 or 800-633-1353, all Fit Plns, IFR tng PPR. Fit Plns by Fax at 514-633-2877 & include phone numbers where pilot can be reached prior to dep. IFR clearance or activation 514-633-3014.
<b>SERVICES</b>	Call out chg may be levied for one or more svcs
<b>FUEL</b>	100LL, JA-1
<b>OIL</b>	15W50, Mobil 254
<b>S</b>	1,2,3,4,6
<b>HELI DATA</b>	FATO 64' x 64' GRVL Safety Area 85' x 85' Max heli overall length 43' Parking Pad 1, 2 & 3: 38' dia ASPH Parking Pad 4: 40' dia ASPH Parking Pad P: 20' x 20' ASPH
<b>RCR</b>	Opr
<b>LIGHTING</b>	RF(FH)
<b>COMM</b>	
<b>MF</b>	ftc 122.35 (without ground station) 3NM excluding the portion S of the N shore of Rivière des Milles-Îles & 2NM around Lac Agile (Mascouche) A/D 2000 ASL (CAR 602.98)
<b>PRO</b>	Arr/dep 095° fr heli, day use only. Arr/dep curved 345° to 040° fr heli, day use only.
<b>CAUTION</b>	Parking positions dimensions are less than the overall length of most types of heli.

# CANADA WATER AERODROME SUPPLEMENT

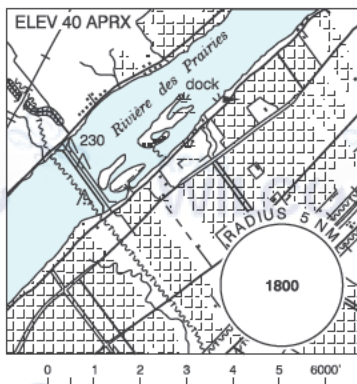
Effective 0901Z 20 April 2023 to 0901Z 21 March 2024

AERODROME/FACILITY DIRECTORY B133

## MONTRÉAL / BOISVERT & FILS QC

CSA4

<b>REF</b>	N45 38 44 W73 35 49 Adj 15°W (2014) UTC-5(4) Elev 40' aprx VTA A5002
<b>OPR</b>	Boisvert & Fils Avn 514-648-1856 Cert PPR
<b>PF</b>	B-1 C-2,3,4,5,6
<b>FLT PLN</b>	(bil) Québec 866-GOMÉTÉO or 866-WXBRIEF (Toll free within Canada) or 866-541-4105 (Toll free within Canada & USA)
<b>SERVICES</b>	
<b>FUEL</b>	100LL
<b>OIL</b>	All
<b>S</b>	1,2,3,4,5

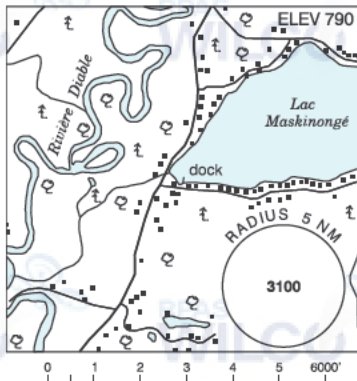


<b>A/D DATA</b>	Open water May-mid Nov.
<b>COMM</b>	(bil) Québec 123 55 (FISE) 126.7 (bcst) Montréal 119.9 267.1 (E) tfc 123.2 5NM outside Montreal CZ, and Montreal TCA. TML Montreal 134.15 - see VTPC or VTA
<b>PRO</b>	Arr/dep acct to maintain a min of 1000' over shore. Touch & go not authorized. Tkof after 0800 hr lcl.
<b>CAUTION</b>	Bridge for Hwy 25 and parallel P-line 1NM SW of base, running across the river, max 230 ASL, see sketch.

## MONT-TREMBLANT (LAC MASKINONGÉ) QC

CMT2

<b>REF</b>	N46 05 14 W74 36 30 2SSW St-Jovite 14°W (2014) UTC-5(4) Elev 790' VTA A5002
<b>OPR</b>	Association Aviateurs Région Mont-Tremblant 819-429-1295 Reg PPR
<b>PF</b>	C-1,2,3,4,5,6
<b>FLT PLN</b>	(bil) Québec 866-GOMÉTÉO or 866-WXBRIEF (Toll free within Canada) or 866-541-4105 (Toll free within Canada & USA)
<b>SERVICES</b>	
<b>S</b>	1,5,7



<b>A/D DATA</b>	Open water mid May-mid Oct. Dock space limited.
<b>COMM</b>	
<b>ATF</b>	tfc 123.2 5NM 3700 ASL
<b>PRO</b>	Tkof after 0800 hr lcl.
<b>CAUTION</b>	Several heliports/aerodromes within 5NM of Mont-Tremblant/St-Jovite A/D. Common freq. See Mont-Tremblant VTPC.

## QUEBEC

## AERODROME/FACILITY DIRECTORY

## ST-ESPRIT QC

CES2

<b>REF</b>	N45 54 41 W73 40 21 Adj NNW 16°W UTC-5(4) Elev 192' VTA A5002	
<b>OPR</b>	Aérodrome Saint-Esprit Inc. 450-839-1111 Fax 450-839-6969 Reg PPR	
<b>PF</b>	C-1	
<b>FLT PLN</b>	(bil)	
<b>FIC</b>	Québec 866-GOMÉTÉO or 866-WXBRIEF (Toll free w/ in Canada) or 866-541-4105 (Toll free w/ in Canada & USA)	
<b>RWY DATA</b>	Rwy 02/20 3000x75 GRASS	
<b>RCR</b>	Opr No win maint Nov-Mar	
<b>COMM</b>	<b>ATF</b> ffc 123.2 5NM BLW 2500 ASL <b>A/G</b> 129.85	
<b>CAUTION</b>	Parachuting activity Mar-Nov to 17,000'. P-line and barn 30 AGL 300' S of Thld 02. Antenna 500 ASL 1.4NM SSE A/D.	